

# LAZER

H I G H P E R F O R M A N C E L I G H T I N G



## VW TIGUAN 2016+ MOUNTING SOLUTIONS

---

**FITTING INSTRUCTIONS**

**ANLEITUNG**

**INSTRUCTIONS**

**INSTRUCCIONES**

## TECHNICAL SUPPORT

aaron@lazerlamps.com / sales@lazerlamps.com  
+44 (0)1992 945601 / +44 (0)1992 677374

## WHAT'S REQUIRED

- HIGH PERFORMANCE LED SPOTLIGHT(S) - 2x ST4 or 1x ST12
- 1x ONE/TWO LAMP HARNESS KIT
- 1x CANBUS HIGHBEAM INTERFACE
- 1x VW TIGUAN (2016+) MOUNTING KIT

## DIFFICULTY LEVEL



## TOOLS REQUIRED



DRILL BIT  
5MM



METRIC  
SOCKET SET



WIRE STRIPPERS  
AND RATCHET CRIMPERS



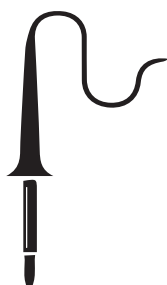
WIRE CUTTERS



RIVET GUN



ALLEN KEY  
SIZE: 5



SOLDERING  
IRON



PHILLIPS / T-25 TORX  
SCREWDRIVER



PLASTIC  
TRIM TOOLS



BUCKET

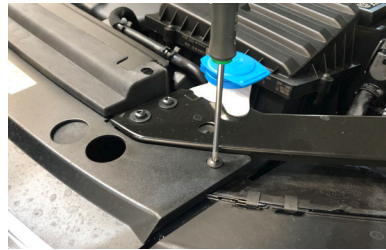
## PRE-INSTALLATION CHECKS

1. Ensure battery is disconnected.

## BUMPER REMOVAL



### STEP 1



Undo the 4x T25 screws holding in the grille.



### STEP 2



Gently pull the grille from the bumper and move onto slam panel. Do not un-plug!



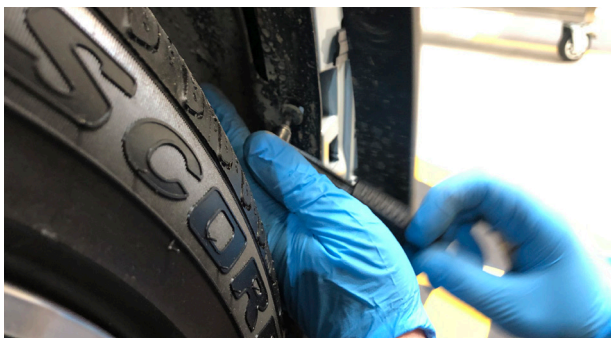
### STEP 3

Undo the hidden T25 on both sides that secure bumper.



### STEP 4

Gently pull the front wheel arch trims forward to give access to the bumper retaining screws.



### STEP 5

Undo the bottom and middle T25 screws from the wheel arch lining.

**BUMPER REMOVAL CONT.****STEP 6**

Undo the T25 screw on the back of the front bumper.

**STEP 7**

Locate and undo the hidden T25 screw in the top of the bumper.

**STEP 8**

Gently release the sides of the front bumper.

**STEP 9**

Pull bumper forward and unplug the front fog lights.

**STEP 10**

Get a bucket ready and release the front headlight washer pipes catching the washer fluid at the same time.

The bumper can now be removed.

## MOUNTING YOUR LIGHT(S)

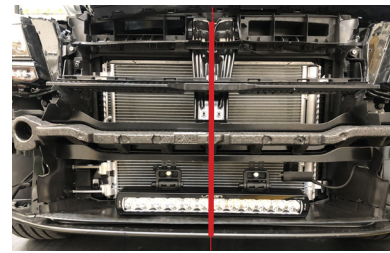


### STEP 1

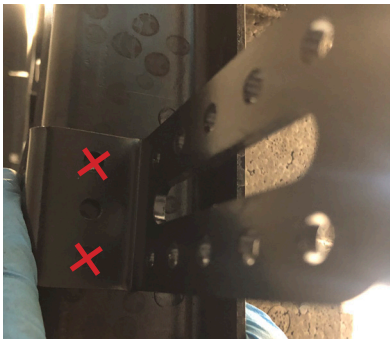
Mount the Centre Mounts (supplied with each lamp) to the bumper beam brackets as shown. The centre bracket should sit in between the 3rd and 4th mounting holes.



### STEP 2



From the centre of the bumper measure 90mm for where the brackets will be mount.



### STEP 3

Drill 2x 5mm holes through the bumper beam and rivet the brackets in place



### STEP 4 - ST12

Slide the ST12 on to the centre mounts and position them as shown, then tighten the M5 grub screws on the centre mounts.



### STEP 4 - ST4'S

Slide both ST4's on to the centre mounts and position them as shown, then tighten the M5 grub screws on the centre mounts.

## WIRING UP YOUR LIGHT

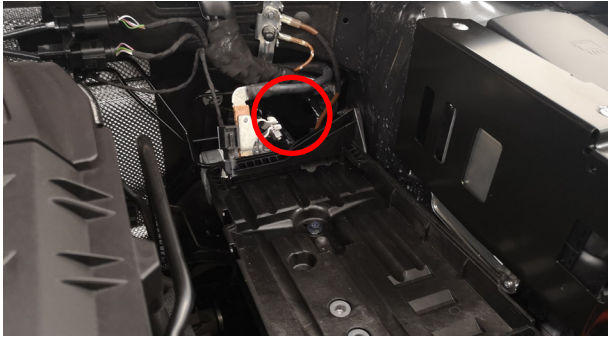
**Please note: Vehicle battery will need to be removed for this process.**

### **IMPORTANT INFORMATION!**

When you start any VW MY06+ after having the battery disconnected the dashboard will display multipule errors.

To reset the errors please follow steps below:

- 1: TURN ENGINE ON
- 2: TURN WHEELS FULL LOCK TO LEFT
- 3: TURN WHEELS FULL LOCK TO RIGHT
- 4: SWITCH IGNITION OFF
- 5: RESTART VEHICLE AND ERRORS WILL DISAPPEAR



### **STEP 1**

Locate the cable entry grommet that is usually hidden by the vehicle battery.



### **STEP 2**

Feed the thin red cable from Lazer wiring kit through the cable entry grommet.



### **STEP 3**

Locate the cable inside the vehicle which feeds through the cable grommet to the footwell.

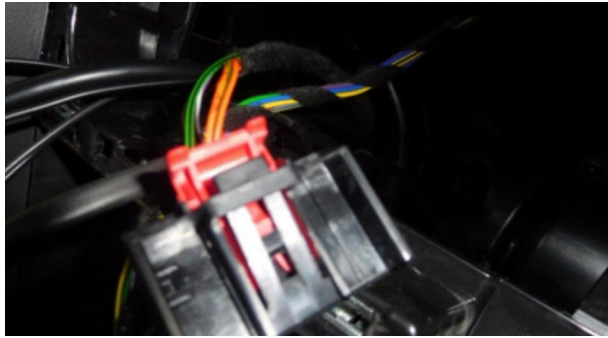


**STEP 4**



Carefully remove climate control facia.

Then pull out the x4 retaining plugs to release the climate panel.

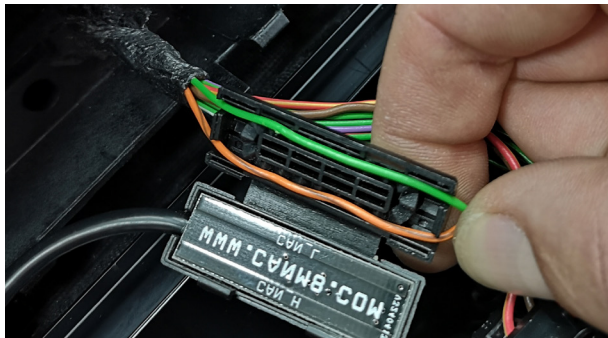


**STEP 5**

Locate the 2 Can wires in the larger black plug.

**Orange/Green = Can Hi**

**Orange/Brown = Can Lo**



**STEP 6**

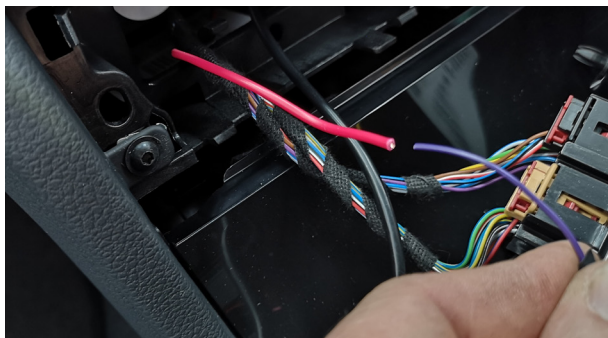


Connect wireless reader or CanM8 white and blue wires to the vehicle CAN wires according to Hi/Lo.



**STEP 7**

Feed Red wire up to climate panel area.



**STEP 8**

Connect thin red wire from Lazer wiring to purple wire from CanM8.


**STEP 9**

Find a suitable Live and Ground for CanM8. This can be found behind the radio.

Mount the CanM8 under the radio.


**STEP 10**

Relocate battery **but leave disconnected**.

Drill a hole and secure the relay with a self tapping screw as shown.


**STEP 11**

Feed the lamp connector(s) through to the front of the bumper and connect to the light(s).

**INSTALLATION CHECKS**

1. Ensure battery is re-connected properly and check for any errors on the dashboard.
2. Test light bar is working fully before re-assembling vehicle.

**LAZER**  
 HIGH PERFORMANCE LIGHTING

**Thank you for choosing a Lazer Lamps product.**  
**Vielen Dank dafür, dass Sie sich für ein Produkt von Lazer Lamps entschieden haben.**  
**Merci pour choisir un produit de Lazer Lamps.**  
**Gracias por la seleccion de productos de Lazer Lamps.**