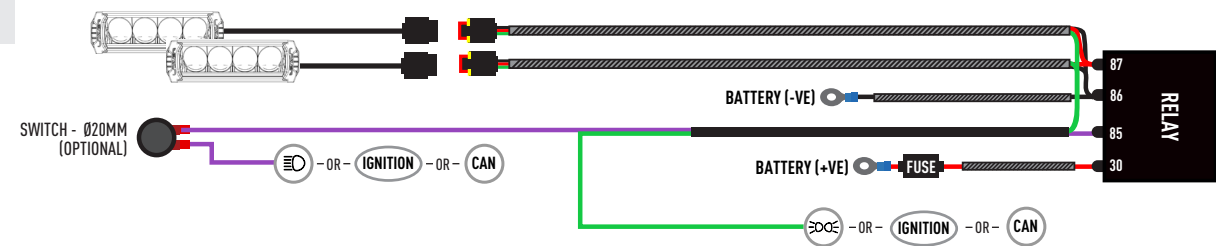
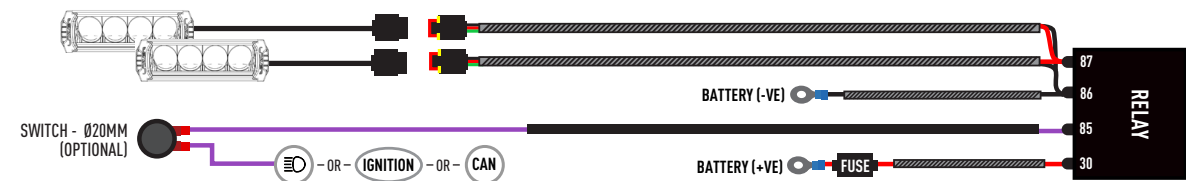


ELECTRICAL CONNECTION

TRIPLE-R 750



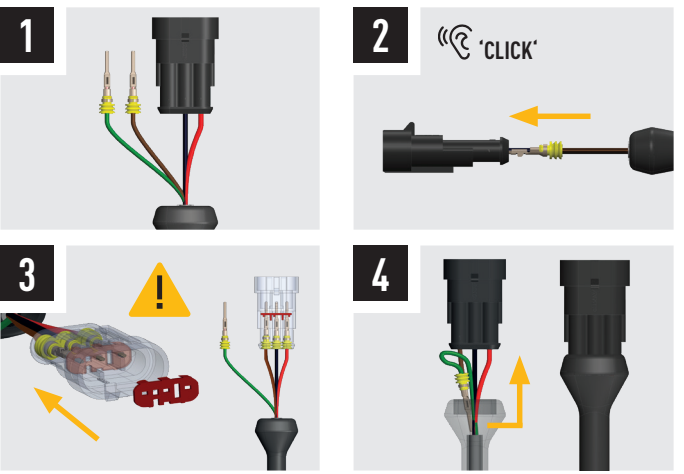
TRIPLE-R 750 ELITE / WIDE



TRIPLE-R 750 BEACON

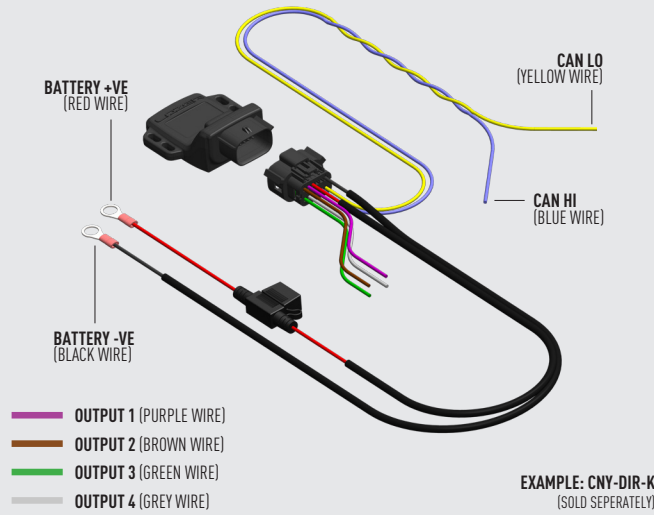
Please refer to the instructions included with the lamps.

LAMP CONNECTOR INFORMATION  
TRIPLE-R POSITION LIGHT FUNCTION (OPTIONAL)



**E9 UNECE REGULATIONS**  
Please scan the QR code to view all UNECE Certificates and information.

**CANBUS INTEGRATION (SOLD SEPERATELY)**  
For vehicles where it is not possible to locate a 12V high beam signal, it will be necessary to take the high beam signal from the vehicle's CAN system. For connection options please visit the Lazer Lamps website, or contact your nearest dealer.



**LAZER**  
HIGH PERFORMANCE LIGHTING  
[WWW.LAZERLAMPS.COM](http://WWW.LAZERLAMPS.COM)

We appreciate your purchase of a Lazer Lamps product, and value your feedback. If you would like to leave feedback on your Lazer experience, please head to the relevant product page on our website [www.lazerlamps.com](http://www.lazerlamps.com).

T +44 (0) 1992 677374  
E [sales@lazerlamps.com](mailto:sales@lazerlamps.com)

Lazer Lamps Ltd, Calder House, Central Road  
Harlow, Essex, CM20 2ST, UK

**MADE IN THE UK** /LAZERLAMPS

**LAZER**  
HIGH PERFORMANCE LIGHTING

**FORD RANGER WILDTRAK X (2023+) GRILLE KIT**  
**FITTING INSTRUCTIONS**





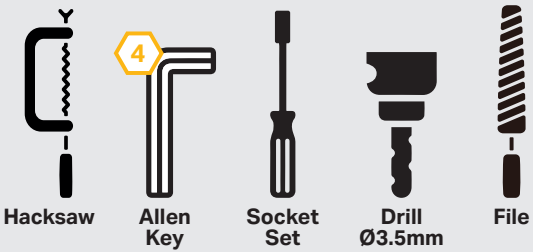
WHAT'S INCLUDED

- 4x Grille Mounting Brackets
- 4x Cutting Guides
- Anti-Theft Fasteners & Key
- Fitting Instructions

Additionally - Kit Includes:

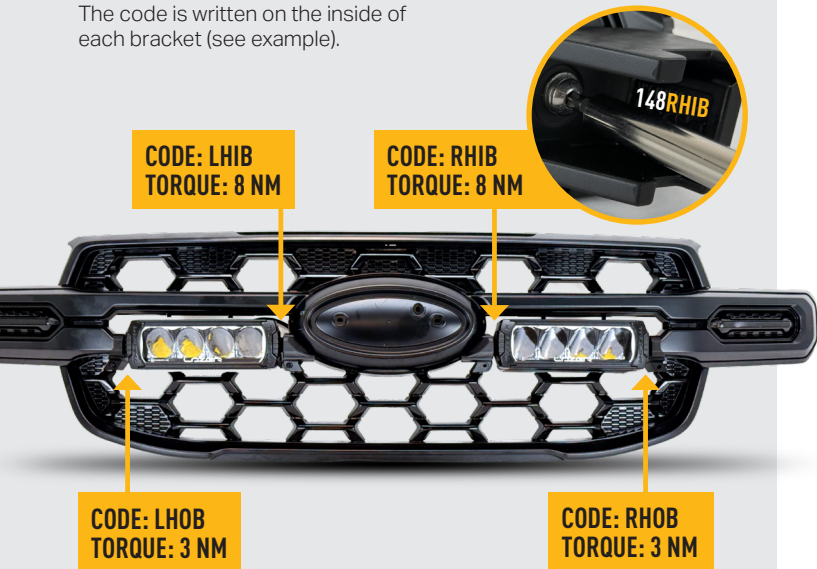
- 2x Triple-R 750 LED Lights
- 1x Two-Lamp Wiring Kit

TOOLS REQUIRED



TORQUE VALUES

The code is written on the inside of each bracket (see example).



INSTALLATION PROCESS - Install should be completed with the grille left on the vehicle.

**!** Before cutting the grille, disconnect the camera and radar wiring behind the grille.

