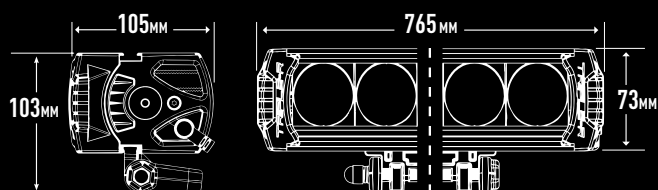




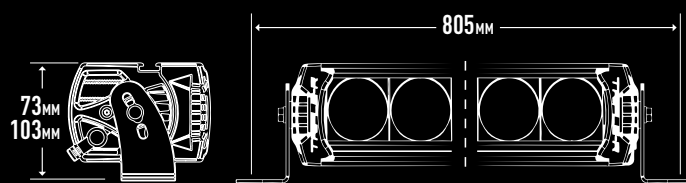
# TRIPLE-R 16 ELITE+



## CENTRE MOUNTING DIMENSIONS



## SIDE MOUNTING DIMENSIONS



## PRODUCT INTRO

The Elite+ range combines high-output white LEDs with supplemental yellow LEDs to deliver four selectable lighting modes optimised for varying off-road conditions. Combo mode blends white and yellow output for powerful night-time visibility with a softer colour temperature, while the yellow-only mode provides wider, lower illumination ideal for fog, dust, or snow. Mode selection is controlled via a momentary switch, with a memory function recalling the last-used setting.

Lighting modes: Boost (white), Combo (white + yellow), Snow/Fog/Dust (yellow), Low Output (white).

## PRODUCT FEATURES

- High-efficiency white (5000K) and PC-yellow LEDs
- Four lighting modes with memory function
- Supplied with one-lamp wiring kit and momentary switch
- Aptiv & Superseal pre-wired connectors
- CAE-optimised heatsink and electronic thermal management
- Hard-coated polycarbonate lens
- Corrosion-resistant anodised and powder-coated finish
- Designed and manufactured in the UK

## TECHNICAL SPECIFICATIONS

|               |  |
|---------------|--|
| WEIGHT        | 2.4 KG   |
| VOLTAGE RANGE | 10V-32V  |
| CONNECTOR     | 2-PIN APTIV / 3-PIN SUPERSEAL CONNECTIONS<br>(WIRING HARNESS INCLUDED) |

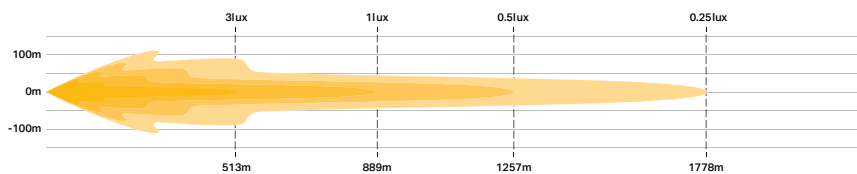
|                          | BOOST MODE    | COMBO MODE             | DUST/FOG/SNOW MODE |
|--------------------------|---------------|------------------------|--------------------|
| RAW LUMENS               | 18,040        | 30,640                 | 12,600             |
| TOTAL DRIVER 'FOV' FLUX  | 11,004        | 18,690                 | 7,686              |
| LED COLOUR (TEMPERATURE) | WHITE (5000K) | WHITE (5000K) & YELLOW | YELLOW             |
| POWER CONSUMPTION        | 185 WATTS     | 332 WATTS              | 142 WATTS          |
| PEAK CURRENT DRAW        | 17.3 AMPS     | 29.2 AMPS              | 12.9 AMPS          |
| CURRENT DRAW (14.4V)     | 12.9 AMPS     | 22.3 AMPS              | 9.6 AMPS           |

## CERTIFICATION

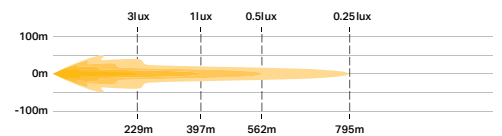
|                      |            |
|----------------------|------------|
| IP RATING            | IP68       |
| EMC CERTIFICATION    | ECE REG 10 |
| SALT SPRAY TEST      | ISO 9227   |
| DUMP LOAD PROTECTION | ISO 7637-2 |

## PHOTOMETRIC DATA

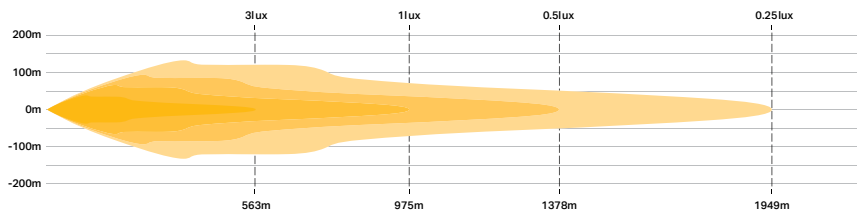
### HIGH BEAM - BOOST MODE (WHITE LED'S)



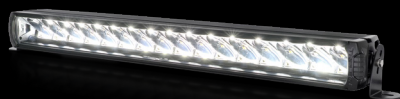
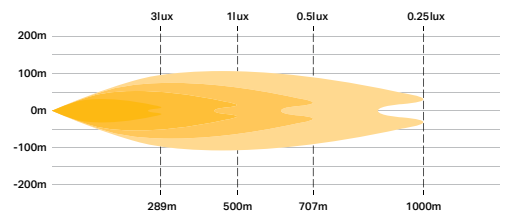
### LOW OUTPUT MODE (WHITE LED'S)



### COMBO MODE (WHITE & YELLOW LED'S)

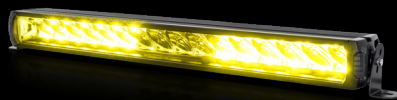


### DUST/FOG/SNOW MODE (YELLOW LED'S)



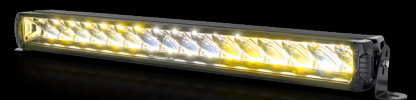
### WHITE LED'S (HIGH BEAM)

Additional low-output mode included – Perfect when full power isn't needed, delivering comfortable illumination with reduced glare from reflective surfaces and surroundings.



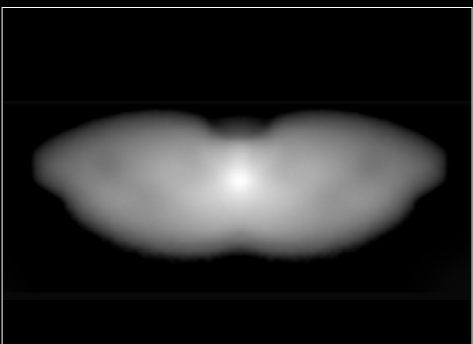
### YELLOW LED'S

Yellow LED output engineered to enhance visibility in adverse conditions including fog, dust, snow, and heavy rain.



### WHITE & YELLOW LED'S (COMBO)

White high beam combined with supplemental yellow LEDs for powerful visibility and a softer colour temperature.



### BEAM DISTRIBUTION (WHITE LED'S)

HORIZONTAL: 28°  
VERTICAL: 16°



INTEGRATED WHITE OR AMBER POSITION LIGHT